



2021 DelDems Reorganization

A BRIEF SUMMARY

Overview

MAIN TOPICS COVERED

Reorganization Defined

Party Structure

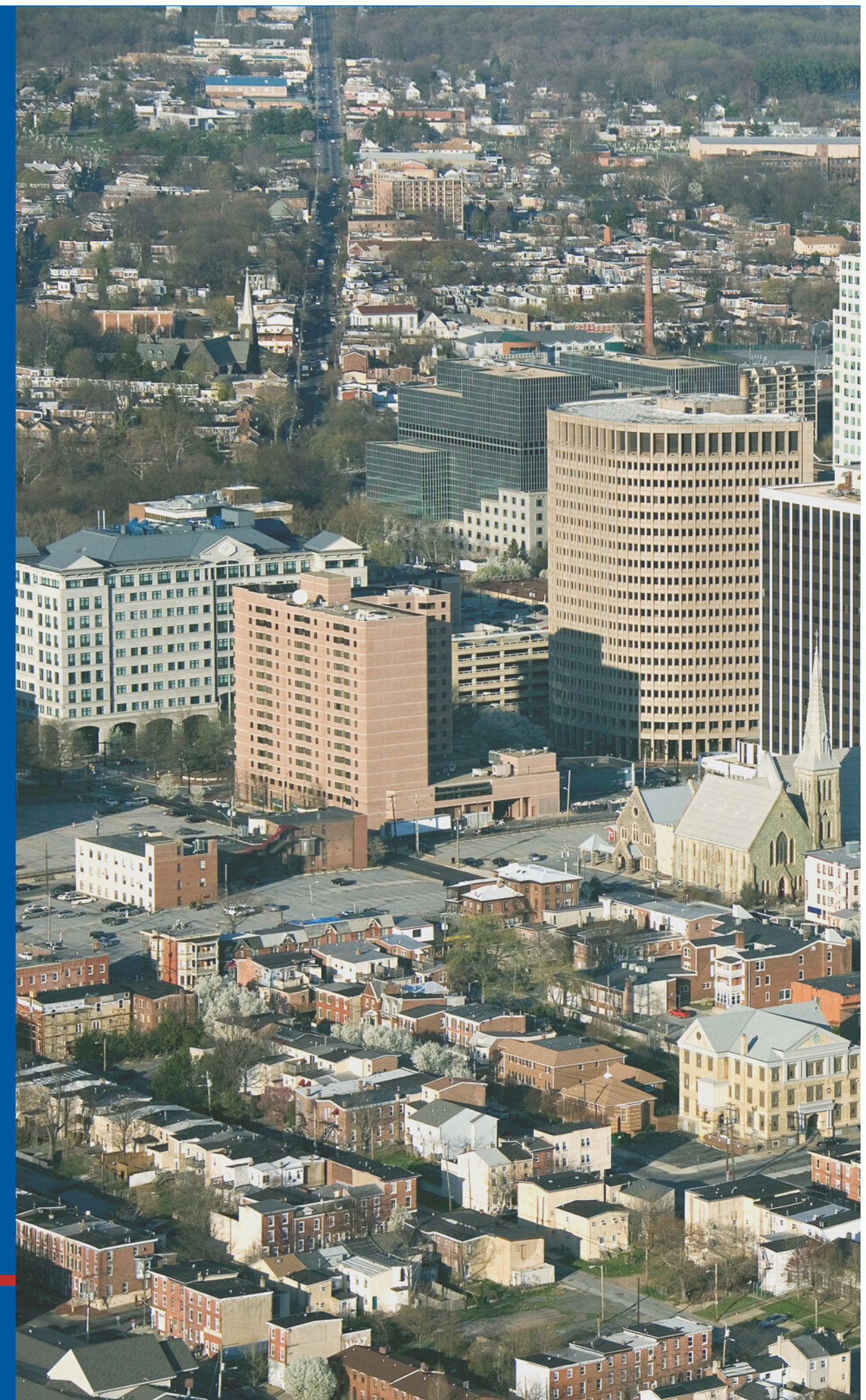
Committee Membership

Officers & Ex Officio Members

Reorganization Meetings, Caucuses, and Conventions

For more on reorganization visit www.deldems.org/2021reorg

Delaware Democratic Party



“ The rules of each subdivision shall provide that in any year after the enactment of these rules, each member of a District Committee and Subdivision Committee shall be selected in the first four months of the year after a presidential election for a term of four years.

STATE PARTY RULES DOCUMENT SECTION 2.1 E

”

Party Reorganization is the process by which these committee members are seated.

Subdivision Committees

New Castle

Kent

Sussex

City of Wilmington

Party Structure

Democratic National Committee (The DNC)



**New Castle Democratic
Committee**

**RD Committees
4-5-6-7-8-9-10-11-
12-13-15-16-17-18-19-
21-22-23-24-25-26-27**

**Wilmington Democratic
Committee**

**All
Ward Committees
and RDs
1-2-3-4**

**Kent Democratic
Committee**

**RD Committees
11-28-29-30-
31-32-33-34**

**Sussex Democratic
Committee**

**RD Committees
14-20-35-36-
37-38-39-40-41**

Party Structure (governing bodies)

State Executive Committee

Elected Statewide Officers | Subdivision Chairs and Treasurers
At-Large Members

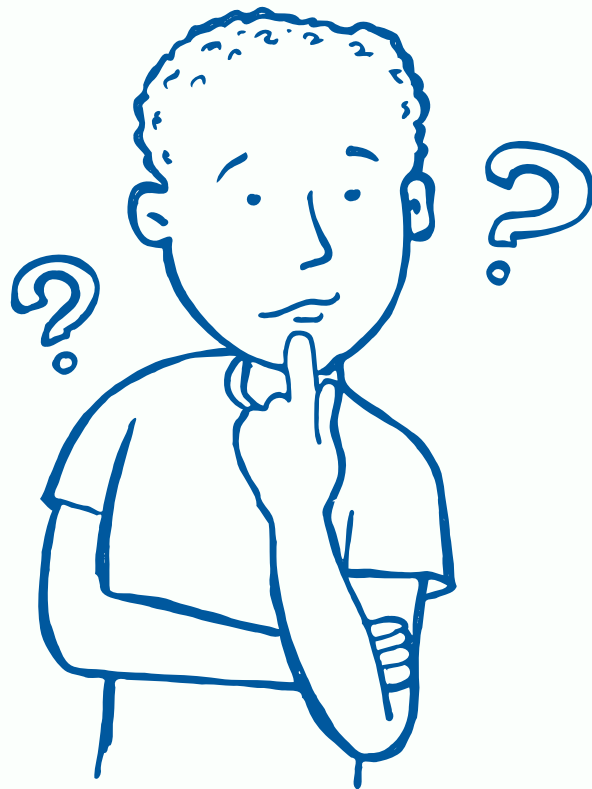
Subdivision Exec. Committee

Elected Subdivision Officers | Rep. District Committee Chairs
At-Large Members

Rep. District Committees

Elected RD Committee Officers | Local Committee Members | Ex Officios

What does a committee member do?



Representative District Committees are the most localized body of the Democratic Party. They are made up of local Democrats, committee members, who advocate for the party in their community.

Responsibilities will vary by committee/subdivision but common asks include

- Attend monthly meetings
- Vote on matters brought before the committee
- Volunteer on local Democratic campaigns
- Organize Election Day get out the vote (GOTV) efforts
- Plan community events and fundraisers
- Monitor political activity in the district and beyond
- Perform outreach to newly registered Democrats in the district
- Play an active role in the local community

Who can be a Committee Member?



"members of the local committee shall be registered Democrats in the election district in which they reside and which they will represent. The committee member shall be a registered Democrat and shall not have been registered as a member of another political party for one year prior to their election."

State Party Rules Section 2.1 B2

Important factors to keep in mind

- With the exception of Sussex county, two Rep. District Committee seats are assigned per Election District.
- In Sussex county, three seats are assigned per ED.
- Democrats from outside of an ED may fill vacant committee seats within their Rep. District and often do.
- Committee seats can be filled after the initial reorganization meeting by a vote of the committee.



COMMITTEE OFFICERS



CHAIR

- Presides over Rep. District/Ward Committee Meetings
- Attends Subdivision Exec. Meetings
- Leads the Rep. District/Ward Committee

VICE CHAIR

- Performs the duties of the Chair in their absence.
- Assumes role of interim-chair (until the following meeting) if the chair is removed/resigns
- Functions as Committee's "second in command"

SECRETARY

- Keep minutes of the proceedings of all Committee Meetings
- Provides five days notification to Members all meetings of the Committee.
- Maintains a roster of committee membership, and provides a copy to Subdivision

TREASURER

- Keeps an accurate account of all monies received and expended.
- Files all campaign finance reports.
- Carries out financial transactions at the direction of the Chair/Committee



EX OFFICIO MEMBERS



Ex Officio Membership

Any Democratic elected official (or filed candidate) residing within an RD/Ward is automatically considered an Ex Officio member of that district's committee. These members are defined as any person elected as a Democrat in a partisan election at the city, county, state, or federal level. Ex Officio members hold the same participation rights with a few exceptions:

- Their absence cannot be counted against quorum; however, if in attendance, their presence is counted towards quorum.
- Prohibited from voting on matters of endorsements and recommendations for endorsements in a partisan race in which they are participating
- Prohibited from voting on the disbursement of committee funds.
- May not serve an officer on the committee

Sample Reorg. Caucus Agenda

1

CHECK-IN & ELIGIBILITY VERIFICATION

The eligibility of the meeting's attendees and participants is determined. State Party staff and/or County Party volunteers will assist in this process.

2

COMMITTEE MEMBERS NOMINATED

Names of interested and eligible resident Democrats are presented to the caucus.

3

COMMITTEE MEMBERS ELECTED

Election(s) held to fill committee member seats. The exact procedure may vary by subdivision. If there are fewer candidates than seats, the committee can be elected as a slate.

4

COMMITTEE OFFICERS ELECTED*

Newly elected committee members elect the 4 officers of the committee.

*Subdivision Rules may require separate meeting



Subdivision Conventions

COUNTY PARTIES ELECT THEIR LEADERSHIP



SUSSEX

March following a
presidential election.



KENT

Subdivision rules do not
specify.



NEW CASTLE

April of the year
following a presidential
election.



WILMINGTON

April of the year
following a presidential
election.

Resident Committee Members will elect their Subdivision's officers and address
other business that may come before the committee





June 2021

DEMOCRATIC STATE CONVENTION

Delegates elect state party
officers and leadership



432^{STATE} CONVENTION DELEGATES

- Delegates must be elected by their RD Committee in March
- Delegate allocation is determined by a district's composite Democratic strength in the last election
- A full district-level breakdown is available on [DelDems.org](https://del Dems.org)

New Castle - 228 Delegates | Kent - 72 Delegates
Sussex - 81 Delegates | Wilmington - 51 Delegates

A (1/3rd) quorum of 144 Delegates is required to
conduct convention business

Delaware's 2021 State Convention





New Castle's Delegation

- 4th Rep. District - 13 Delegates
 - 5th Rep. District - 13 Delegates
 - 6th Rep. District - 12 Delegates
 - 7th Rep. District - 12 Delegates
 - 8th Rep. District - 12 Delegates
 - 9th Rep. District - 14 Delegates
 - 10th Rep. District - 11 Delegates
 - 11th Rep. District - 7 Delegates
 - 12th Rep. District - 12 Delegates
 - 13th Rep. District - 11 Delegates
 - 15th Rep. District - 14 Delegates
 - 16th Rep. District - 12 Delegates
 - 17th Rep. District - 12 Delegates
 - 18th Rep. District - 11 Delegates
 - 19th Rep. District - 10 Delegates
 - 21st Rep. District - 11 Delegates
 - 22nd Rep. District - 11 Delegates
 - 23rd Rep. District - 8 Delegates
 - 24th Rep. District - 11 Delegates
 - 25th Rep. District - 8 Delegates
 - 26th Rep. District - 11 Delegates
 - 27th Rep. District - 12 Delegates
-



Wilmington's Delegation

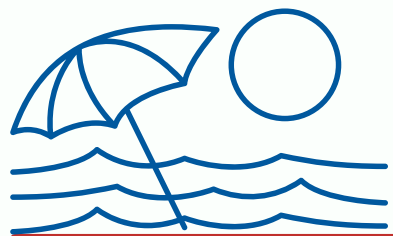
- 1st Rep. District - 15 Delegates
- 2nd Rep. District - 12 Delegates
- 3rd Rep. District - 11 Delegates
- 4th Rep. District - 13 Delegates

Despite organizing its local committees by City Council district, Wilmington's delegates are allocated by State House district



Kent County's Delegation

- 11th Rep. District - 7 Delegates
- 28th Rep. District - 10 Delegates
- 29th Rep. District - 11 Delegates
- 30th Rep. District - 6 Delegates
- 31st Rep. District - 11 Delegates
- 32nd Rep. District - 9 Delegates
- 33rd Rep. District - 8 Delegates
- 34th Rep. District - 10 Delegates



Sussex County's Delegation

- 14th Rep. District - 14 Delegates
- 20th Rep. District - 13 Delegates
- 35th Rep. District - 6 Delegates
- 36th Rep. District - 7 Delegates
- 37th Rep. District - 9 Delegates
- 38th Rep. District - 11 Delegates
- 39th Rep. District - 7 Delegates
- 40th Rep. District - 6 Delegates
- 41st Rep. District - 8 Delegates

WHAT SHOULD YOU DO NEXT?



REVIEW THE PROCESS

Review the rules of your subdivision and know the procedures



CONNECT WITH THE COMMITTEE

Plan to attend the reorg meeting in your district



STAY UP TO DATE

Keep an eye on [Deldems.org](https://deldems.org) for updates on the reorganization process



Have questions?

CONTACT YOUR
STATE PARTY



@DelawareDemocraticParty
@Deldems



19 E Commons Blvd
New Castle, DE 19720



www.deldems.org

TRAVIS R. WILLIAMS

Executive Director
travis@deldems.org

New Castle Chair

Dave Woodside
dbwoodside@gmail.com

Sussex Chair

Jane Hovington
jehovahrohi@aol.com



Wilmington Chair

Cassandra Marshall
ctmarshall@gmail.com

Kent Chair

John Starke
johnkstarke@gmail.com